



Hardura & Armacord

Swatch Card

Trim Manufacturers for 1949-1989 Classic Cars

www.john-skinner.co.uk

Hardura

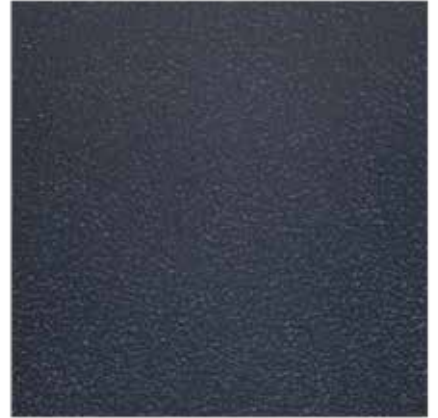
A heavy duty flooring material with a jute felt back and grained effect PVC finish. Commonly used throughout the Jaguar range.



Black



Grey



Dark Blue



French Blue



Red



Suede Green



Burnt Orange



Tan



Cinnamon



Biscuit

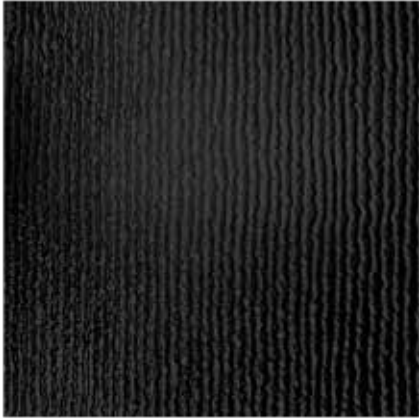


Beige



Armacord

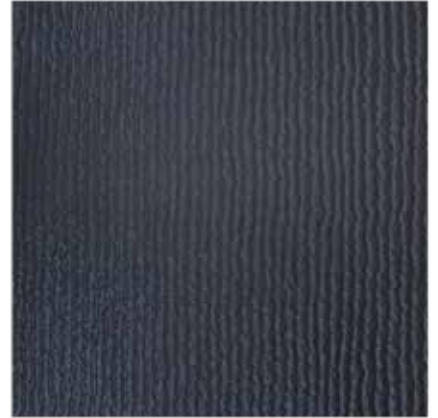
A heavy duty flooring material with a jute felt back and grained effect PVC finish with a ribbed surface texture. Used throughout the Austin Healey range.



Black



Grey



Dark Blue



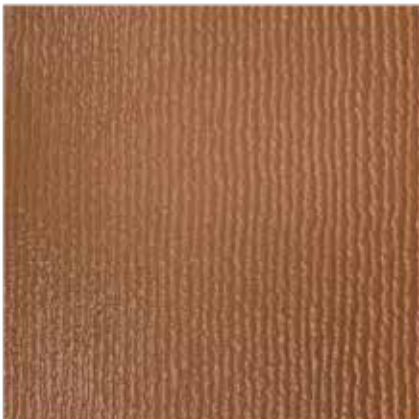
French Blue



Red



Suede Green



Tan



Cinnamon



Biscuit



Beige



Swatch Service



With extensive material & colour options, we know there's nothing quite like a sample in hand to help you in your decision. That's why we offer a free worldwide sample service. We can provide swatch cuttings for all of our materials, including bindings and pipings. Please contact us to request samples for your restoration project.

All swatches displayed on this card are subject to batch shade variations. Although minimal in most cases, we always recommend you receive swatch samples before placing an order with us. Larger sample cuttings are available on request.

Our online material & colour library is a comprehensive resource to help inform your interior fabric choices. You can also learn more about each material and how we structure our library in accordance with original factory production lines. To browse our swatches online, please visit us at www.john-skinner.co.uk.



John Skinner (Manufacturing) Ltd,
Unit 8 Manchester Park,
Tewkesbury Road,
Cheltenham, Gloucestershire,
England, UK
GL51 9EJ

www.john-skinner.co.uk

Email: sales@john-skinner.co.uk



@johnskinnerltd



facebook.com/JSLtd